

SINGLE-FAMILY  
HOUSES  
CONTEMPORARY  
HOMES  
IN GERMANY



Chris van Uffelen

BRAUN

# ET35



**Architects:** Gassner & Zarecky Architekten und Ingenieure Partnerschaft, Andreas Kellner  
**Year of completion:** 2015  
**Location:** Moosach, Bavaria  
**Gross floor area:** 233 m<sup>2</sup>  
**Number of bedrooms:** 3  
**Main materials / structure:** waterproof concrete / solid wood construction  
**Ecological features:** wood construction with water-water heat pump as heating system

# 200

The architects were commissioned by a young couple with two children to build on a corner plot on the land with a sloping cut. It is integrated into the village on three sides and bordered to the south by a stream. Behind, the location on the outskirts of the village opens up a view of the landscape. The development plan correspondingly included strict specifications.

The concept of a solid, steady core that opens outwards and relates to its surroundings was implemented as a free-standing plinth building on the meadow. Its ground plan in the form of a parallelogram follows the property. This alignment creates a harmonious integration into the topography surrounding the building. An independent garage was integrated into the building volume in order to achieve a uniform overall character. A pergola connects the main building with a garden house.

Large openings on the ground floor create connections between entrance and exit as well as inside and outside. Kitchen and dining area optically extend

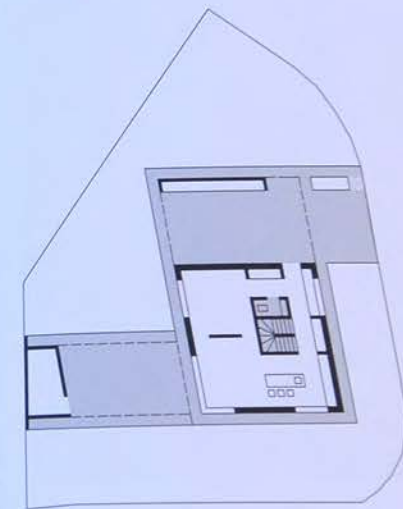
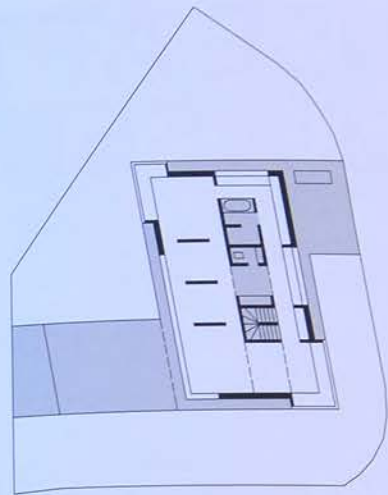
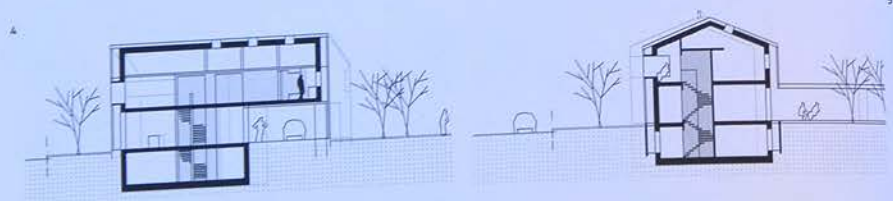
to the west into the garden. Analogously, large flush seating windows on the upper floor invite to relax and enjoy the view. The wooden façade conceals the prescribed roof overhang and the irregular window openings behind the homogeneous, permeable shell.

The basement was constructed in exposed concrete as a solid construction in the area where there is groundwater. The house was built in solid wood, whereby the shell remains visible inside. The pre-grayed board construction in rough sawed larch sets a counterpoint to the machine plastered façades of the surrounding buildings and associates the appearance of simple rural development. The dark tiled roof forms a homogeneous unit with the grayish cladding. The generous glazing underneath is diagonal and aligned to the points of the compass and ensures balanced climate and light conditions.



- 1 Exterior view with pergola and terrace
- 2 Exterior view of the entrance area
- 3 Pergola details
- 4 General view of the pergola and terrace





1 Bedroom  
 2 Interior view of the corner glazing  
 3 Bathroom  
 4 Longitudinal section  
 5 Cross section

6 First floor plan  
 7 Ground floor plan